

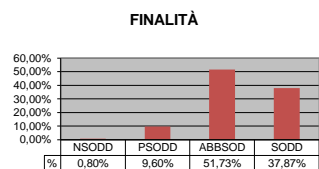
LICEO-STUDENTI

ANNO SCOLASTICO 2014/2015

QUESTIONARIO DI SODDISFAZIONE DEL SERVIZIO SCOLASTICO

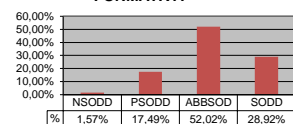
consegnati 100
compilati 95
tabulati 95

1 FINALITÀ	NSODD	PSODD	ABBSOD	SODD	NR
	3	36	194	142	5
	0,80%	9,60%	51,73%	37,87%	



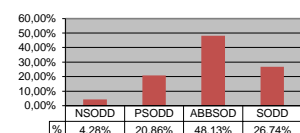
2 QUALITÀ DELL'OFFERTA FORMATIVA	NSODD	PSODD	ABBSOD	SODD	NR
	7	78	232	129	27
	1,57%	17,49%	52,02%	28,92%	

QUALITÀ DELL'OFFERTA FORMATIVA



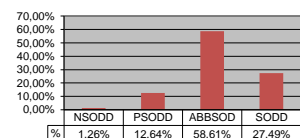
3 VERIFICA E VALUTAZIONE	NSODD	PSODD	ABBSOD	SODD	NR
	8	39	90	50	3
	4,28%	20,86%	48,13%	26,74%	

VERIFICA E VALUTAZIONE



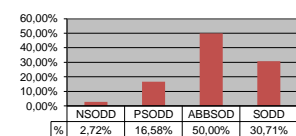
4 RAPPORTI SCUOLA-FAMIGLIA	NSODD	PSODD	ABBSOD	SODD	NR
	8	80	371	174	19
	1,26%	12,64%	58,61%	27,49%	

RAPPORTI SCUOLA-FAMIGLIA



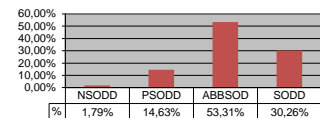
5 ORGANIZZAZIONE DEI SERVIZI	NSODD	PSODD	ABBSOD	SODD	NR
	10	61	184	113	12
	2,72%	16,58%	50,00%	30,71%	

ORGANIZZAZIONE DEI SERVIZI



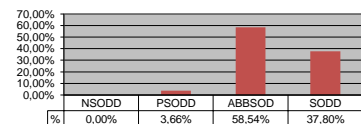
RISULTATI TOTALI	NSODD	PSODD	ABBSOD	SODD	NR
	36	294	1071	608	79
	1,79%	14,63%	53,31%	30,26%	

RISULTATI TOTALI



6 VALUTAZIONE COMPLESSIVA DEL SERVIZIO	NSODD	PSODD	ABBSOD	SODD	NR
	0	3	48	31	13
	0,00%	3,66%	58,54%	37,80%	

VALUTAZIONE COMPLESSIVA



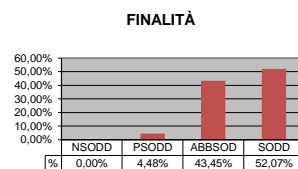
LICEO-GENITORI

ANNO SCOLASTICO 2014/2015

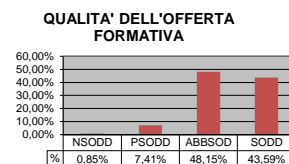
QUESTIONARIO DI SODDISFAZIONE DEL SERVIZIO SCOLASTICO

consegnati 92
compilati 75
tabulati 75

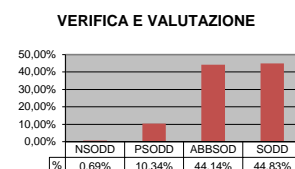
1 FINALITÀ	NSODD	PSODD	ABBSOD	SODD	NR
	0	13	126	151	10
	0,00%	4,48%	43,45%	52,07%	



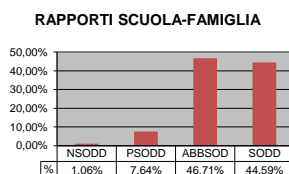
2 QUALITÀ DELL'OFFERTA FORMATIVA	NSODD	PSODD	ABBSOD	SODD	NR
	3	26	169	153	24
	0,85%	7,41%	48,15%	43,59%	



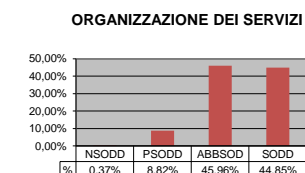
3 VERIFICA E VALUTAZIONE	NSODD	PSODD	ABBSOD	SODD	NR
	1	15	64	65	5
	0,69%	10,34%	44,14%	44,83%	



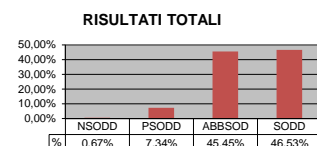
4 RAPPORTI SCUOLA-FAMIGLIA	NSODD	PSODD	ABBSOD	SODD	NR
	5	36	220	210	19
	1,06%	7,64%	46,71%	44,59%	



5 ORGANIZZAZIONE DEI SERVIZI	NSODD	PSODD	ABBSOD	SODD	NR
	1	24	125	122	7
	0,37%	8,82%	45,96%	44,85%	



RISULTATI TOTALI	NSODD	PSODD	ABBSOD	SODD	NR
	10	109	675	691	59
	0,67%	7,34%	45,45%	46,53%	



6 VALUTAZIONE COMPLESSIVA DEL SERVIZIO	NSODD	PSODD	ABBSOD	SODD	NR
	0	1	33	36	5
	0,00%	1,43%	47,14%	51,43%	

